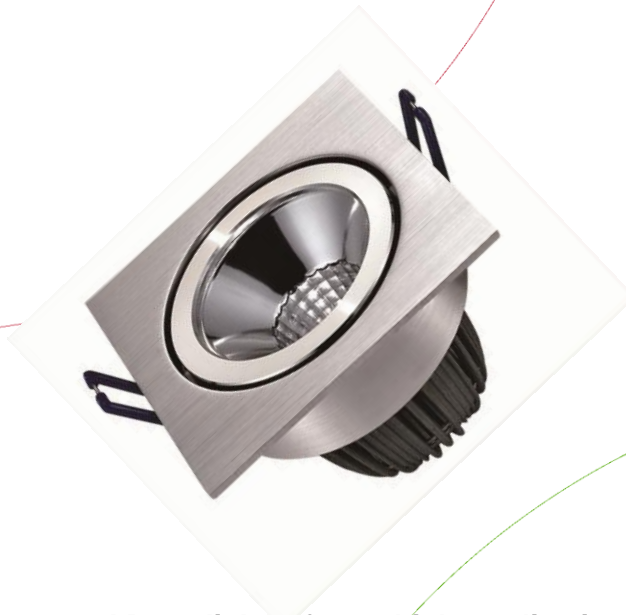


## Lycalux 6 Watt Recessed Downlight Square



### **Recessed Downlighter for multiple applications**

Single Power LED

Up to 80% saving compared to conventional lighting

Plug and Play

Clear Lexan cover

Inner ring is set in different angles

High Quality stainless steel and Aluminium

**Luminaire parameters**

Input Voltage:	AC100V-240V, 0.45A
Frequency:	50Hz--60Hz
Harmonic Dissortion:	≤13%
Power Factor:	>0.95
LED Working Voltage:	10 Volts
Current:	600 mA
LED Usage:	5.8 W
Total Usage:	6 W
Lumen Efficiency:	Warmwhite:77 lm/W – Naturalwhite 79lm/W
Chip Brand :	Citizen Powerled
Color temperature:	Warmwhite: 2950-3250K, Naturalwhite:4000-4500K
Beamangle:	45°
Total lumen output:	Warmwhite: 475 lumen / Naturalwhite: 485 lm/W
Light Distribution:	Round
LED junction temperature:	≤70°C
Min/max workingtemperature:	-40°C~+55°C
IP grade :	IP20
Lifespan:	50000Hrs
Connection:	Optional: 2 Wired Wieland (L,N)
Material:	Aluminium + Stainless steel



## Dimensions and Weight

Square: 92mm x 92mm  
Cuttinghole: 80mm  
Height: 60mm

## Lightdistribution

